

Guide to Garden Wildlife



Hedgehog

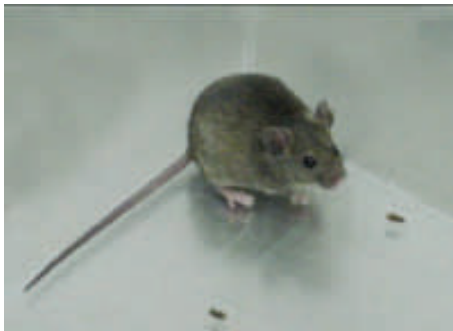
Animal Facts

- Active: April –October
- Nocturnal
- Eat insects, eggs, fruit and fungi
- Shelter in hedges, long vegetation and compost



Wood mouse

- Brown coats with grey –white underside
- Large ears, bright eyes and long tail
- Eat insects, fruit, nuts and fungi
- Nest underground or in hollow trees
- Mainly nocturnal
- Move around by hopping and leaping



House mouse

- Grey-brown greasy coats
- Large ears, long pink-grey tail
- Pointed face
- Mainly nocturnal
- Move around by scurrying and climbing
- Often make nests in buildings



Brown rat

- Drab grey-brown fur
- Round pink ears, black eyes and long tail
- Mainly nocturnal
- Nest close to human activities
- Move around by running and swimming



Bank vole

- Red-brown coats with greyer sides
- Rounded ears, large bright eyes and short tail
- Eat insects, fruit, nuts and fungi
- Nest under dense ground cover
- Move around by scurrying and climbing
- Both nocturnal and diurnal

Guide to Garden Wildlife



Field vole

- Dark brown—grey fur.
- Small ears
- Tiny tail
- Both nocturnal and diurnal
- Eat grasses and herbs
- When breeding they build nests of fine grass



Mole

- Usually underground unless very warm and dry
- Look for mole hills
- Spade-like fore feet with large claws
- Short velvety dark grey/brown fur
- Small eyes and ears



Common shrew

- Very small mouse-like
- Long pointed snout
- Very small ears and eyes
- Nocturnal and Diurnal
- Dark brown / black velvety fur on back
- Lighter fur on underside



Grey squirrel



Fox

Guide to Garden Wildlife



Wren



Goldcrest



Blue tit



Great tit



Coal tit



Long tailed tit



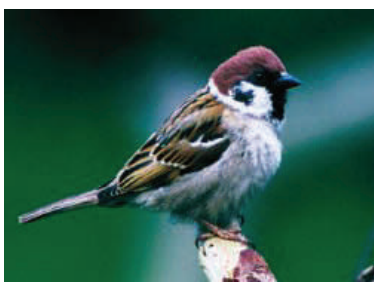
Dunnock



Robin



House sparrow



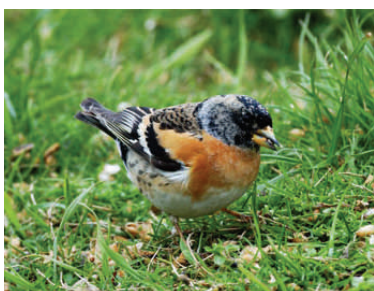
Tree sparrow



Chaffinch



Greenfinch



Brambling



Song thrush



Mistle thrush

Guide to Garden Wildlife



Black redstart



Blackbird



Starling



Jay



Wood pigeon



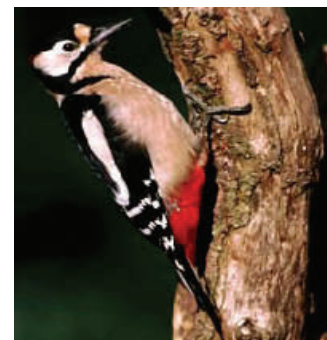
Pigeon



Carrion crow



Rook



Great spotted woodpecker



Magpie



Peregrine falcon



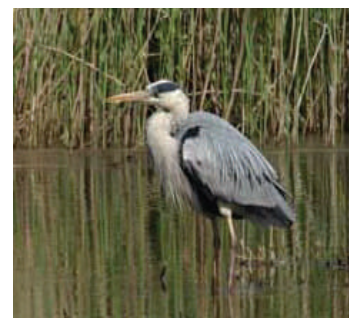
Kestrel



Sparrowhawk



Cormorant



Grey heron

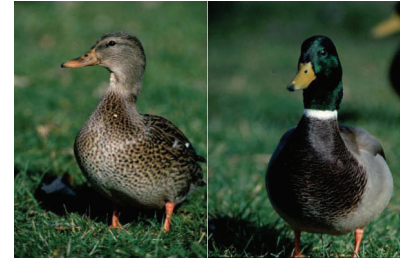
Guide to Garden Wildlife



Coot



Moorhen



Mallard



Common frog

Smooth moist skin

Greenish brown/yellow

Brown patch behind the eye

Lay eggs in large clumps—frog spawn

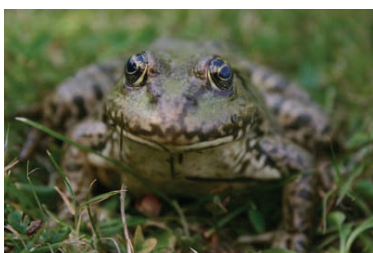


Common toad

Drier bumpier skin

Brownish skin

Lay eggs in strings in deeper water—toad spawn



Marsh frog

More aquatic than the common frog

Has a distinctive laughing call



Palmate newt

Guide to Garden Wildlife



This picture is of a seven-spotted ladybird. However, if the ladybird has brown legs and a white M-shape pattern between the white false eyes then it is likely to be the non-native harlequin which can be recorded on the survey form or at the following website www.ladybird-survey.org

Ladybird



Lacewing



Member of the damselfly family

Banded demoiselle



Member of the dragonfly family

Four-spotted chaser



Also known as the Green Stink Bug

Green shieldbug

PLEASE NOTE: All the possible insects which you are likely to find in your garden are too numerous to list so please refer to guide books or wildlife websites if you are unsure or feel free to contact us for help on 0207 264 4668.